

RESOURCE GUIDE FOR  
CHILDREN & ADULTS  
WITH INTELLECTUAL &  
DEVELOPMENTAL  
DISABILITIES  
THEIR FAMILIES  
& PROFESSIONALS



*The Arc.*

[WWW.ARCMUSKEGON.ORG](http://WWW.ARCMUSKEGON.ORG)

Updated April 2019

## *TABLE OF CONTENTS*

LEGAL/FINANCIAL & ACCESS.....	3-11
COMMUNITY INTEGRATION.....	12-20
MEDICAL & CLINICAL.....	21-28
HOUSING.....	29-38
RESOURCES.....	39-60
STATEWIDE ORGANIZATIONS.....	61
NATIONAL ORGANIZATIONS.....	62

LEGAL/FINANCIAL  
&  
ACCESS

## *IN THIS SECTION YOU WILL FIND.....*

*MAINLY GOVERNMENT AGENCIES RESPONSIBLE FOR ELIGIBILITY FOR VARIOUS SERVICES, LEGAL NEEDS AND THEIR FUNDING. THEY ARE GATEWAY ESSENTIALS FOR SERVICES AND INCOME ASSISTANCE.*



# HEALTHWEST

## SERVICE

- ACCESS TO BEHAVIORAL HEALTH (DEVELOPMENTAL DISABILITIES AND MENTAL ILLNESS), SUBSTANCE USE, YOUTH & FAMILY SERVICES
- APPLIED BEHAVIORAL ANALYSIS SERVICES

## ELIGIBILITY

MEDICAID OR MI CHILD

SOME PRIVATE INSURANCES (CALL FOR MORE INFORMATION)

## FEES

NONE

## CONTACT INFO

- MAIN OFFICE: (231) 724-1111
- NEW SERVICE REQUESTS: (231) 720-3200
- CUSTOMER SERVICES: (231) 720-3201
- [WWW.HEALTHWEST.NET](http://WWW.HEALTHWEST.NET)
- [CUSTOMER.SERVICES@HEALTHWEST.NET](mailto:CUSTOMER.SERVICES@HEALTHWEST.NET)

# HEALTHWEST

## SERVICE

INTELLECTUAL & DEVELOPMENTAL DISABILITY SERVICES (ADULT)

- SUPPORTS COORDINATOR
- COMMUNITY LIVING SUPPORTS
- SKILL BUILDING
- SUPPORTED EMPLOYMENT
- ACCESS TO HOUSING
- SELF-ADVOCACY
- CLASSES

## ELIGIBILITY

MEDICAID OR MI CHILD

SOME PRIVATE INSURANCES (CALL FOR MORE INFORMATION)

## FEES

NONE

## CONTACT INFO

- MAIN OFFICE: (231) 724-1111
- NEW SERVICE REQUESTS: (231) 720-3200
- CUSTOMER SERVICES: (231) 720-3201
- [WWW.HEALTHWEST.NET](http://WWW.HEALTHWEST.NET)
- [CUSTOMER.SERVICES@HEALTHWEST.NET](mailto:CUSTOMER.SERVICES@HEALTHWEST.NET)

# *MICHIGAN DEPARTMENT OF HEALTH & HUMAN SERVICES (MDHHS)*

## SERVICE

- MEDICAID APPLICATION
- CASH ASSISTANCE
- BRIDGE CARD
- HOME HELP/CHORE SERVICES
- ADULT & CHILDREN'S SERVICES
- SAFETY & INJURY PREVENTION
- KEEPING MICHIGAN HEALTHY

## ELIGIBILITY

INCOME BASED

## FEES

NONE

## CONTACT INFO

- (231) 733-3700
- [WWW.MICHIGAN.GOV/MDHHS](http://WWW.MICHIGAN.GOV/MDHHS)

# *MICHIGAN REHABILITATION & CAREER SERVICES (MRS)*

## SERVICE

- EMPLOYMENT SERVICES
- DISABILITY RESOURCES
- TICKET TO WORK

## ELIGIBILITY

IDENTIFIED BARRIER TO EMPLOYMENT

## FEES

NONE

## CONTACT INFO

- (231) 722-2013
- [WWW.MICHIGAN.GOV/MDHHS](http://WWW.MICHIGAN.GOV/MDHHS) (UNDER ADULT & CHILDREN'S SERVICES SECTION OF THE DEPARTMENT OF HEALTH & HUMAN SERVICES)



# **FAMILY SUPPORT SUBSIDY**

## **SERVICE**

FINANCIAL SUBSIDY FOR CHILDREN WITH AUTISM, SEVERE MULTIPLE IMPAIRMENTS (SXI) OR SEVERE COGNITIVE IMPAIRMENTS

## **ELIGIBILITY**

TAXABLE INCOME NEEDS TO BE BELOW \$60,000

## **FEES**

NONE

## **CONTACT INFO/APPLICATION PROCESS**

HEALTHWEST: (231) 720-3201

# *SOCIAL SECURITY ADMINISTRATION* *(SSA)*

## SERVICE

SUPPLEMENTAL SECURITY INCOME (SSI) & SOCIAL SECURITY DISABILITY INCOME (SSDI), SOCIAL SECURITY APPLICATION & ASSISTANCE

## ELIGIBILITY

DETERMINED BY APPLICATION

## FEES

NONE

## CONTACT INFO

- 1(800) 772-1213
- LOCAL OFFICE: 1(866) 763-2632
- [WWW.SSA.GOV](http://WWW.SSA.GOV)

# *MUSKEGON COUNTY PROBATE COURT*

## SERVICE

- GUARDIANSHIP APPLICATION OR REMOVAL OF A GUARDIAN
- CONSERVATORSHIP
- DECEDENT'S ESTATES

## ELIGIBILITY

SEVERE DEVELOPMENTAL DISABILITY & LIMITED OPTIONS

## FEES

COURT COSTS

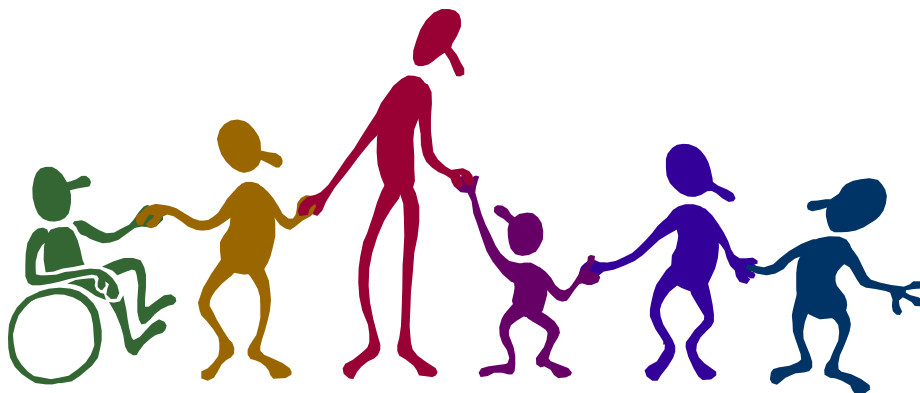
## CONTACT INFO

- (231) 724-6241
- [WWW.CO.MUSKEGON.MI.US/PROBATECOURT](http://WWW.CO.MUSKEGON.MI.US/PROBATECOURT)

# COMMUNITY INTEGRATION

*IN THIS SECTION YOU WILL FIND.....*

*A SNAPSHOT OF PROGRAMS, CLUBS,  
ORGANIZATIONS, AND MUNICIPALITIES  
THAT OFFER FUN AND RECREATION  
OPPORTUNITIES IN OUR COMMUNITY.*



## *A SAMPLING*

### MINORS

- BOYS AND GIRLS CLUB OF MUSKEGON
- SALVATION ARMY (AGES PRE-K THROUGH 12)
- LAKESHORE MUSEUM CENTER
- CITY SPONSORED PROGRAMS
- AREA CHURCHES
- MUSKEGON YMCA

### ADULTS

- MUSKEGON YMCA
- COMMUNITY EDUCATION PROGRAMS
- NEIGHBORHOOD ASSOCIATIONS
- CITY SPONSORED PROGRAMS
- HEALTHWEST WELLNESS CLASSES (FOR PERSONS SERVED)
- VOLUNTEERING
- AREA CHURCHES

SIGN UP FOR THE ARC MUSKEGON MONTHLY COMMUNITY CALENDAR FOR IDEAS ON WHAT'S HAPPENING IN OUR COMMUNITY THAT IS OFTEN FREE & LOTS OF FUN!

# *PIONEER RESOURCES, INC*

## SERVICE

LEISURE AND RECREATION CLUB (LARC)

- MUSKEGON & OTTAWA COUNTIES

## ELIGIBILITY

NONE

## FEES

LIFETIME FEE TO JOIN: \$1.00

EVENT FEES

## CONTACT INFO

- (231) 220-2320
- [WWW.PIONEERRESOURCES.ORG](http://WWW.PIONEERRESOURCES.ORG)

# *PIONEER RESOURCES, INC/PIONEER TRAILS CAMP*

## SERVICE

CAMP OPPORTUNITIES

## ELIGIBILITY

NONE

## FEES

YES, PARTIAL SUBSIDIES AVAILABLE

## CONTACT INFO

- (231) 773-5355
- [WWW.PIONEERRESOURCES.ORG](http://WWW.PIONEERRESOURCES.ORG)





# *CAMP OPPORTUNITIES ACROSS MICHIGAN*

## SERVICE

LIST OF CAMPS OFFERED IN MICHIGAN

## ELIGIBILITY

VARIES BASED ON CAMP

## FEES

VARIES BASED ON CAMP

POSSIBLE SCHOLARSHIPS AVAILABLE

## CONTACT INFO

[WWW.BRIDGES4KIDS.ORG/SUMMERCAMP.HTML](http://WWW.BRIDGES4KIDS.ORG/SUMMERCAMP.HTML)

# MUSKEGON YMCA/CAMP PENDALOUAN

## SERVICE

- OVERNIGHT CAMP
- DAY CAMPS
- WINTER CAMP
- HALLOWEEN CAMP
- SPRING BREAK ESCAPE
- FAMILY CAMP

## ELIGIBILITY

VARIES BASED ON CAMP

## FEES

VARIES BASED ON CAMP

POSSIBLE SCHOLARSHIPS AVAILABLE

## CONTACT INFO

- (231) 894-4538
- [HTTPS://PENDALOUAN.ORG](https://pendalouan.org)

# *NO MORE SIDELINES*

## SERVICE

- SPORTS
- COMMUNITY EVENTS

## ELIGIBILITY

- CHILDREN & YOUNG ADULTS WITH INTELLECTUAL AND DEVELOPMENTAL DISABILITIES
- AGES 7 & UP

## FEES

NONE

## CONTACT INFO

- (231) 332-3849
- [WWW.NOMORESIDELINES.ORG](http://WWW.NOMORESIDELINES.ORG)

# *AUTISM NETWORK OF MUSKEGON*

## SERVICE

- SOCIAL ACTIVITIES
- RESOURCES

## ELIGIBILITY

YOUNG ADULTS WITH AUTISM SPECTRUM DISORDER (ASD)

## FEEES

- NONE TO JOIN
- EVENT FEES

## CONTACT INFO

[MUSKEGONAUTISM@AOL.COM](mailto:MUSKEGONAUTISM@AOL.COM)

[HTTPS://MUSKEGONAUTISM.WIXSITE.COM/MUSKEGONAUTISM  
/EVENTS](https://muskegonautism.wixsite.com/muskegonautism/events)

**MEDICAL**  
**&**  
**CLINICAL**

*IN THIS SECTION YOU WILL FIND.....*

*ASSISTANCE TO MEDICAL SUPPLIES AND  
MEDICAL REIMBURSEMENTS ALONG WITH  
INFORMATION ON HOW AND WHERE TO  
ACCESS OTHER HEALTH AND CLINICALLY  
BASED NEEDS AND SERVICES.*



## *COMMUNITY HEALTH CARE CLINICS*

### \*HACKLEY COMMUNITY CARE

- BAKER ST.- (231) 737-1335
- LEAHY ST.- (231) 733-6800

### \*MUSKEGON FAMILY CARE

- GETTY ST.- (231) 739-9315

### INTEGRATED HEALTH CLINIC

(FOR HEALTHWEST CONSUMERS)

- HEALTHWEST (APPLE AVENUE)
- (231) 724-1111
- (231) 724-1152

\*BEHAVIORAL HEALTH SERVICES AVAILABLE

# *CHILDREN'S SPECIAL HEALTH CARE*

## SERVICE

COVERAGE AND REFERRAL FOR SPECIALTY SERVICES, MILEAGE REIMBURSEMENT & MORE

## ELIGIBILITY

- CHRONIC HEALTH CONDITIONS
- UP TO 20 YEARS OLD \* (PERSONS 21 AND OLDER WITH CYSTIC FIBROSIS OR CERTAIN BLOOD COAGULATION DISORDERS MAY ALSO QUALIFY FOR SERVICES)
- ALL INCOME LEVELS

## FEES

FEES TO JOIN /LOW INCOME FEE IS WAVED

## CONTACT INFO

- (231) 724-6209



# *MICHIGAN FAMILY TO FAMILY (F2F)*

## SERVICE

- MEDICAL SERVICES AND TESTING
- PROVIDER RESOURCES AND INFORMATION
- HEALTH INSURANCE AND FINANCING OPPORTUNITIES
- FAMILY CENTER AND PHONE LINE
- TRAININGS
- RESOURCE REPOSITORY

## ELIGIBILITY

VARIES

## FEES

VARIES

## CONTACT INFO

- (517) 324-7396
- [WWW.F2FMICHIGAN.ORG](http://WWW.F2FMICHIGAN.ORG)
- [F2FMICHIGAN@MPHI.ORG](mailto:F2FMICHIGAN@MPHI.ORG)

# *AIRWAY OXYGEN*

## SERVICE

- RESPIRATORY AND CLINICAL SERVICES
- 24 HOUR ON-CALL EMERGENCY SERVICE
- MEDICAL EQUIPMENT PURCHASE & RENTAL

## FEES

YES

## CONTACT INFO

- LOCAL: (231) 767-9825
- 1(800) 632-0730
- [WWW.AIRWAYOXYGENINC.COM](http://WWW.AIRWAYOXYGENINC.COM)

# *AIR-CAIRE*

## SERVICE

- RESPIRATORY THERAPY
- 24 HOUR EMERGENCY SERVICE
- DIABETIC & ENTERAL SERVICES
- LIFE SUPPORT SERVICES
- HOME MODIFICATIONS
- BEDS & ACCESSORIES
- MEDICAL SUPPLIES
- PATIENT LIFTS
- PEDIATRIC
- POWER MOBILITY
- SLEEP THERAPY
- WHEELCHAIR & AMBULATORY

## FEES

YES

## CONTACT INFO

- LOCAL: (231) 737-7070
- [WWW.AIR-CAIRE.COM](http://WWW.AIR-CAIRE.COM)

# *PAWS WITH A CAUSE*

## SERVICE

### SUPPORT DOGS FOR THOSE WITH DISABILITIES

- ASSISTANCE DOGS
- TEAM JOURNEY
- ACCESS RIGHTS
- CLIENT SUPPORT
- RESEARCH & DEVELOPMENT
- PAWS PRISON PARTNERS
- PAWS PET ADOPTION

## ELIGIBILITY

VARIABLES, BASED ON SUPPORT DOG NEEDED

## FEES

NONE

## CONTACT INFO

- NATIONAL HEADQUARTERS (616) 877-7297
- SOUTHEASTERN MICHIGAN REGIONAL OFFICE (248) 619-9201
- [WWW.PAWSWITHACAUSE.ORG](http://WWW.PAWSWITHACAUSE.ORG)

# HOUSING

## *IN THIS SECTION YOU WILL FIND.....*

*OPTIONS AND IDEAS FOR HOUSING, OFFERING DIFFERENT LEVELS OF SUPPORT. THIS SECTION HIGHLIGHTS A VARIETY OF PROVIDERS, IDEAS, AND RESOURCES TO START MAKING A PLAN.*



## COMMUNITY BASED OPTIONS TO CONSIDER

- *RENT AN APARTMENT WITH A FRIEND  
(SUBSIDIZED HOUSING AVAILABLE IN MUSKEGON)*
- *RENT OR BUY A HOME*
- *RENT OR BUY A CONDO*
- *CREATE AN APARTMENT IN THE  
FAMILY HOME*
- *RESIDENTIAL WITH SUPPORTS*
- *ROOM AND BOARD*
- *ADULT FOSTER CARE*
- *SPECIALIZED RESIDENTIAL (ACCESS  
THROUGH HEALTHWEST)*

## *COMMUNITY BASED PROVIDER AGENCIES*

WITH SPECIAL RESIDENTIAL TO INDEPENDENT LIVING  
WITH SUPPORT IN THE MUSKEGON AREA

- PIONEER RESOURCES, INC.
  - 231-773-5355
- HGA SUPPORT SERVICES
  - 231-728-3501
- MOKA CORPORATION
  - 800-644-2434
- OVERCOMING BARRIERS
  - 231-747-7883
- SAMARITAS
  - 231-722-2400

(GATEKEEPER MAY BE HEALTHWEST)



## *CONTINUED*

- LICENSED ADULT FOSTER CARE (CALL DHHS FOR LIST)
  - 231-733-3700
  - [WWW.MICHIGAN.GOV/MDHHS](http://WWW.MICHIGAN.GOV/MDHHS)
- MUSKEGON COUNTY APARTMENT LISTINGS (CALL ARC MUSKEGON FOR LIST)
  - 231-777-2006
- COMMUNITY ENCOMPASS (MCLAUGHLIN NEIGHBORHOOD)
  - 231-728-3117

# *MOKA CORPORATION*

## SERVICE

SPECIALIZED RESIDENTIAL

## ELIGIBILITY

HEALTHWEST (MEDICAID)

## FEES

- SSI
- SSDI
- SOCIAL SECURITY

## CONTACT INFO

- 1(800) 644-2434 EXT. 648
- [WWW.MOKA.ORG](http://WWW.MOKA.ORG)
- [CONTACT@MOKA.ORG](mailto:CONTACT@MOKA.ORG)

# *SAMARITAS*

## SERVICE

- SENIOR HOUSING
- SPECIALIZED RESIDENTIAL FOR INDIVIDUALS WITH INTELLECTUAL AND DEVELOPMENTAL DISABILITIES
- FOSTER CARE

## ELIGIBILITY

VARIABLES

## FEES

- SSI
- SSDI
- SOCIAL SECURITY

## CONTACT INFO

- (313) 823-7700
- [WWW.SAMARITAS.ORG](http://WWW.SAMARITAS.ORG)

# *PIONEER RESOURCES, INC*

## SERVICE

- SUPPORTED HOUSING
- SPECIALIZED GROUP HOMES

## ELIGIBILITY

VARIES

## FEES

- SSI
- SSDI
- SOCIAL SECURITY

## CONTACT INFO

- (231) 773-5355
- [WWW.PIONEERRESOURCES.ORG](http://WWW.PIONEERRESOURCES.ORG)

# **GRACIOUS GROUNDS, INC**

OTTAWA COUNTY

## **SERVICE**

HOUSING FOR ADULTS WITH INTELLECTUAL AND  
DEVELOPMENTAL DISABILITIES

## **ELIGIBILITY**

AGE 18 AND OLDER  
LEASE AGREEMENT

## **FEES**

YES

## **CONTACT INFO**

- (231) 750-1205
- [SANDRAJBAKER63@GMAIL.COM](mailto:SANDRAJBAKER63@GMAIL.COM)

# *HGA SUPPORT SERVICES*

## SERVICE

- SPECIALIZED RESIDENTIAL

## ELIGIBILITY

HEALTHWEST (MEDICAID)

## FEES

- SSI
- SSDI
- SOCIAL SECURITY

## CONTACT INFO

- (231) 728-3501
- [WWW.HGASUPPORTSERVICES.ORG](http://WWW.HGASUPPORTSERVICES.ORG)
- [INFO@HGASUPPORTSERVICES.ORG](mailto:INFO@HGASUPPORTSERVICES.ORG)

# RESOURCES

## *IN THIS SECTION YOU WILL FIND.....*

*A SAMPLING OF AREA RESOURCES THAT ARE AN IMPORTANT REFERENCE WHEN EXPLORING COMMUNITY RESOURCES FOR AVAILABLE SERVICES, SUPPORTS, AND LINKS TO THE APPROPRIATE AGENCIES.*





# *MUSKEGON AREA TRANSIT SYSTEM* *(MATS)*

## SERVICE

- LINE HAUL
- MONTHLY CLASSES ON HOW TO RIDE THE MATS BUS
- GO-BUS
- TROLLEY (SEASONAL)
- GREYHOUND BUS LINE HUB

## ELIGIBILITY

LINE HAUL

DISCOUNT FARE AVAILABLE-ELIGIBILITY BASED

## FEES

VARIES

## CONTACT INFO

- (231)722-6048
- [WWW.MATSBUS.COM](http://WWW.MATSBUS.COM)

# *LAKESHORE RIDE LINK*

## SERVICE

RESOURCE TO SPECIALIZED TRANSPORTATION

## ELIGIBILITY

VARIES

## FEES

VARIES

## CONTACT INFO

- [WWW.LAKESHORERIDELINK.ORG](http://WWW.LAKESHORERIDELINK.ORG)
- CALL 211

# 211

## SERVICE

COUNTY WIDE INFORMATION & REFERRAL: BASIC NEEDS & SERVICES

## ELIGIBILITY

NONE

## FEES

NONE

## CONTACT INFO

CALL 211

# *GOODWILL INDUSTRIES OF WEST MICHIGAN*

## SERVICE

- JOB TRAINING
- SKILL BUILDING
- RETAIL WORKFORCE DEVELOPMENT
- MONEY WORKS
- RETURN-TO-WORK
- GOOD TEMPS

## ELIGIBILITY

VARIABLES BY REFERRAL SOURCES & FUNDING

## FEES

NONE

## CONTACT INFO

- CORPORATE: (231) 722-7871
- CAREER CENTER: (231) 722-7871
- [WWW.GOODWILLWM.ORG](http://WWW.GOODWILLWM.ORG)
- [CONTACTUS@GOODWILLWM.ORG](mailto:CONTACTUS@GOODWILLWM.ORG)

# *SALVATION ARMY*

## SERVICE

- EMERGENCY NEEDS
- SHELTER
- HOUSING
- YOUTH CAMPS & RECREATION

## ELIGIBILITY

ASSESSMENT TO DETERMINE ELIGIBILITY

## FEES

NONE

## CONTACT INFO

(231) 773-3284

[HTTPS://WWW.SALVATIONARMY.ORG/](https://www.salvationarmy.org/)

# LOVE, INC

## SERVICE

- EMERGENCY NEEDS
- SHELTER
- JOB SKILLS
- FOOD, HOUSEHOLD/PERSONAL CARE, BABY, FURNITURE, CLOTHING MINISTRIES.
- CLASSES OFFERED FOLLOWING ORIENTATION
- PROJECT RAMP
- WHITE LAKE CLEARINGHOUSE

## ELIGIBILITY

ASSESSMENT TO DETERMINE ELIGIBILITY

## FEES

NONE

## CONTACT INFO

- (231) 777-3905
- [WWW.LOVEINCOFMUSKEGON.COM](http://WWW.LOVEINCOFMUSKEGON.COM)
- [INFO@LOVEINCOFMUSKEGON.COM](mailto:INFO@LOVEINCOFMUSKEGON.COM)

# COMMUNITY ENCOMPASS

## SERVICE

- HOUSING
- YOUTH EMPOWERMENT PROGRAM (YEP!)
- MUSKEGON PRESCRIBES FOOD FOR HEALTH (MPFH)
- McLAUGHLIN GROWS URBAN FARM
- SACRED SUDS
- NEIGHBORHOOD FACELIFT
- CATCH CAMP

## ELIGIBILITY

VARIES

## FEES

NONE

## CONTACT INFO

(231) 728-3117

[HTTP://WWW.COMMUNITYENCOMPASS.ORG/CONTACT](http://www.communityencompass.org/contact)

# **GREAT START COLLABORATIVE**

## **SERVICE**

- COMMUNITY SUPPORT & RESOURCES FOR CHILDREN FROM BIRTH THROUGH AGE 5

## **ELIGIBILITY**

VARIES BASED ON PROGRAM

## **FEES**

VARIES BASED ON PROGRAM

## **CONTACT INFO**

- MAISD: (231) 777-2637
- [WWW.MUSKEGONISD.ORG/ACADEMICSERVICES/EARLYCHILDHOOD/GREATSTART](http://WWW.MUSKEGONISD.ORG/ACADEMICSERVICES/EARLYCHILDHOOD/GREATSTART)



# *BRIDGES 4 KIDS*

## SERVICE

- A STATE WIDE REFERRAL SYSTEM FOR PARENTS & PROFESSIONALS SEEKING HELP FOR CHILDREN AGES BIRTH TO ADULTHOOD

## ELIGIBILITY

NONE

## FEES

NONE

## CONTACT INFO

[WWW.BRIDGES4KIDS.ORG](http://WWW.BRIDGES4KIDS.ORG)

# **MDHHS: FAMILY RESOURCE CENTERS**

## **SERVICE**

- APPLICATIONS FOR CASH ASSISTANCE
- CLOTHING, SHELTER, MEDICAID, & SCHOOL BASED PARENT INVOLVEMENT PROGRAMS

## **ELIGIBILITY**

NONE

## **FEES**

VARIES

## **CONTACT INFO**

LOCATED IN PRIORITY SCHOOLS THROUGHOUT THE COUNTY

# *MICHIGAN ALLIANCE FOR FAMILIES (THE ARC MICHIGAN)*

## SERVICE

- INFORMATION & SUPPORT FOR FAMILIES WHO RECEIVE SPECIAL EDUCATION SERVICES (OR MAY BE ELIGIBLE)
- EDUCATIONAL WORKSHOPS

## ELIGIBILITY

NONE

## FEES

NONE

## CONTACT INFO

- 1(800) 552-4821
- [WWW.MICHIGANALLIANCEFORFAMILIES.ORG](http://WWW.MICHIGANALLIANCEFORFAMILIES.ORG)
- [INFO@MICHIGANALLIANCEFORFAMILIES.ORG](mailto:INFO@MICHIGANALLIANCEFORFAMILIES.ORG)

\*LOCAL REFERRALS TO MENTORS & ADVOCATES

\*MULTIPLE LANGUAGE OPTIONS FOR PRINTED MATERIALS

# *THE ARC MUSKEGON*

## SERVICE

- SPECIALIZED INFORMATION & REFERRAL
- EDUCATION/PARENT SUPPORT
- SEMINARS
- SELF-ADVOCACY
- SPECIAL EDUCATION & MENTAL HEALTH ADVOCATES
- INDEPENDENT FACILITATION SERVICES
- REPRESENTATIVE PAYEE SERVICES
- POOLED TRUST

## ELIGIBILITY

SERVING CHILDREN AND ADULTS WITH INTELLECTUAL AND DEVELOPMENTAL DISABILITIES AND THEIR FAMILIES

## FEES

NONE

## CONTACT INFO

- (231) 777-2006
- [WWW.ARCMUSKEGON.ORG](http://WWW.ARCMUSKEGON.ORG)
- [INFO@ARCMUSKEGON.ORG](mailto:INFO@ARCMUSKEGON.ORG)

# *MICHIGAN PROTECTION & ADVOCACY SERVICES*

## SERVICE

- SYSTEMS ADVOCACY
- SPECIALIZED INFORMATION & REFERRAL
- LEGAL
- TRAINING & SEMINARS
- TECHNICAL ASSISTANCE
- RESOLUTION OF DISABILITY-RELATED ISSUES
- MONITORING FOR ABUSE & NEGLECT IN FACILITIES

## ELIGIBILITY

NONE

## FEES

NONE

## CONTACT INFO

- 1(800) 288-5923
- (517) 487-1755
- [WWW.MPAS.ORG](http://WWW.MPAS.ORG)

# *DOWN SYNDROME ASSOCIATION OF WEST MICHIGAN (DSAWM)*

## SERVICE

- PARENT SUPPORT
- EDUCATION PROGRAMS-ALL AGES, EARLY STAGES (0-5), SCHOOL AGE (5-14), TEEN/ADULT (14+)
- INFORMATION REFERRAL

## ELIGIBILITY

NONE

## FEES

ANNUAL MEMBERSHIP, SOME PROGRAMS FREE WITHOUT MEMBERSHIP

## CONTACT INFO

- (616) 956-3488
- [WWW.DSAWM.ORG](http://WWW.DSAWM.ORG)

# **DISABILITY NETWORK OF WEST MICHIGAN**

## **SERVICE**

- INFORMATION & REFERRAL
- ACCESSIBILITY CONSULTATION
- DISABILITY SENSITIVITY TRAINING
- PEER SUPPORT
- INDEPENDENT LIVING GUIDE
- TRANSPORTATION SUPPORT
- EMPLOYMENT SUPPORTS
- RIGHTS/ADA
- BENEFITS-SSD/SSI

## **ELIGIBILITY**

ANY TYPE OF DISABILITY

## **FEES**

NONE

## **CONTACT INFO**

- (231) 722-0088
- [WWW.DISABILITYNETWORKWM.ORG](http://WWW.DISABILITYNETWORKWM.ORG)

# *CATHOLIC CHARITIES OF WEST MICHIGAN*

## SERVICE

- FOOD PANTRIES
- BABY SUPPORT
- FAMILY SUPPORT
- COUNSELING
- ADOPTION & FOSTER CARE

## ELIGIBILITY

VARIES BASED ON PROGRAM

## FEES

NONE

## CONTACT INFO

- (231) 726-4735
- [WWW.CCWESTMI.ORG](http://WWW.CCWESTMI.ORG)



# **MUSKEGON AREA INTERMEDIATE SCHOOL DISTRICT (MAISD)**

## **SERVICE**

- PARENT ADVISORY COMMITTEE /PAC (SPECIAL EDUCATION)
- HEAD START
- TRANSITION SERVICES
- SPECIAL EDUCATION COMPLAINTS
- EARLY ON
- AUTISM SPECTRUM DISORDER CONSULTANTS
- PARENT RESOURCES
- CAREER TECH CENTER
- MUSKEGON PROMISE

## **ELIGIBILITY**

SCHOOL AGE

## **FEES**

NONE

## **CONTACT INFO**

- (231) 777-2637
- [WWW.MUSKEGONISD.ORG](http://WWW.MUSKEGONISD.ORG)

# MUSKEGON & SURROUNDING COUNTIES RESOURCE LIST

## FOOD PANTRIES

- CATHOLIC CHARITIES, LOAVES & FISHES, 1095 THIRD ST...(231) 726-5341  
HOURS: TUES, THURS, FRI (9:30AM-1 PM)  
**\*CLIENTS MAY VISIT ONCE EVERY 4 WEEKS**
- SALVATION ARMY, 1221 SHONAT ST...(231) 773-3284  
HOURS: MONDAY-FRIDAY (12:30PM-3:45PM)
- MAP (MISSION FOR AREA PEOPLE), 2500 JEFFERSON ST...(231) 733-1792  
CALL TO MAKE AN APPOINTMENT  
SUPPER HOUSE HOURS: MONDAY-FRIDAY (4:00PM-5:20PM)

## HOUSING RESOURCES

- COMMUNITY ENCOMPASS, 19 HARTFORD AVE...  
(231) 728-3117  
**\*HOUSING ASSESSMENT RESOURCE AGENCY (HARA)**

## SAMPLING OF AREA APARTMENTS

- WHISPERING HILLS APTS. GRANT, MI.....(231)834-9590
- GLEN OAKS APTS.....(231) 773-4142
- AMAZON APTS.....(231) 725-0040
- PARK TERRACE APTS.....(231) 759-1449
- BLANCHARD RENTALS.....(616) 638-8721
- WESTSHORE PROPERTIES.....(231) 798-6430
- BEVERLY HILLS APTS.....(231) 744-1968
- TRINITY VILLAGE II.....(231) 722-7205
- LIGHTHOUSE PROPERTY MGMT.....(231) 903-4427
- NELSON PLACE (SENIORS 55.....(231) 727-4077

## RENT & UTILITY ASSISTANCE

- DHS, 2700 BAKER ST...(231) 733-3700
- TRUE NORTH COMMUNITY SERVICES, 6308 S. WARNER AVE, P.O. BOX 149 FREMONT, MI 49412
  - \*EMPOWER PROGRAM...(231) 924-0641 or 1(855) 300-8013
  - \*[HTTP://WWW.TRUEORTHSERVICES.ORG/RESOURCE-SEARCH](http://www.truenorthservices.org/resource-search)
- MO CAP, 1170 W. SOUTHERN...(231) 725-9499

## EMERGENCY & NATURAL DISASTER SERVICES

- EMERGENCY ASSISTANCE.....**911**
- RED CROSS, 313 W. WEBSTER.....(231) 726-3555
- MUSKEGON POLICE DEPARTMENT TIP LINE  
(231) 846-TIPS
- MUSKEGON POLICE DEPARTMENT MAIN DESK  
(231) 724-6750
- MUSKEGON COUNTY SHERIFF/COUNTY JAIL  
(231) 724-6275

## HELPFUL STATE ORGANIZATIONS

- THE ARC MICHIGAN (1-800-292-7851)
- AUTISM SOCIETY OF MICHIGAN (1-800-223-6722)
- MICHIGAN PROTECTION AND ADVOCACY (1-800-288-5923)
- MICHIGAN DEPARTMENT OF HEALTH & HUMAN SERVICES (1-855-275-6424)
- UNITED CEREBRAL PALSY OF MICHIGAN (1-800-828-2714)
- MICHIGAN ALLIANCE FOR FAMILIES (1-800-552-4821)
- MICHIGAN COALITION FOR DEAF AND HARD OF HEARING (1-800-968-7327)
- CHILDREN'S HOSPITAL OF MICHIGAN (1-888-362-2500)
- BRAIN INJURY ASSOCIATION OF MICHIGAN-WEST MICHIGAN CHAPTER (231-301-0340)
- MICHIGAN DEPARTMENT OF EDUCATION (1-866-990-3227)
- ASSOCIATION FOR THE BLIND AND VISUALLY IMPAIRED (1-800-466-8084)
- STATE OF MICHIGAN COUNCIL ON DEVELOPMENTAL DISABILITIES (1-517-334-7240)



## HELPFUL NATIONAL ORGANIZATIONS

- THE ARC US (1-800-433-5255)
- ADMINISTRATION ON INTELLECTUAL AND DEVELOPMENTAL DISABILITIES (AIDD) (1-202-401-4541)
- NATIONAL DOWN SYNDROME SOCIETY(1-800-221-4602)
- UNITED CEREBRAL PALSY (UCP) (1-800-872-5827)
- NATIONAL ORGANIZATION ON FETAL ALCOHOL SYNDROME (NOFAS) (1-800-666-6327)

